

Renault TRIBER

Space for everything




RENAULT
Passion for life





Renault
TRIBER
Space for everything



The more the merrier. In India, this is not just a motto, it's a norm. At home, work or play, we enjoy everything with larger groups and our ever-growing social circles. Today, with so much more to do, we seek even more space for our passions, hobbies and experiences.

Be it a short drive to a concert, a trip to go surfing or a long vacation with the tribe, what India needs is a car that can accommodate both, people and plans. Which is why the new Renault TRIBER is here. As India's most spacious sub-4m car, the ultra modular TRIBER gives you surprising flexibility and more space for everyone, every experience and everything.

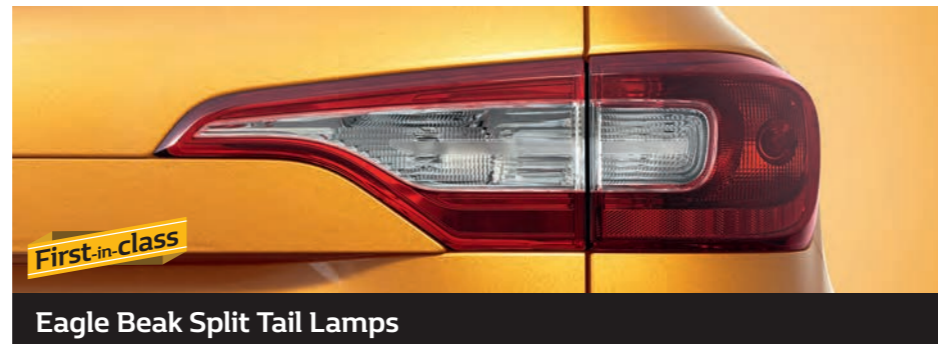
ROBUST AND ATTRACTIVE

STYLING

The new Renault TRIBER is sure to catch attention with its striking Projector Headlamps, Stylish Roof Rails and LED DRLs. The 3-part ultra-modern Triple Edge Chrome Front Grille and Stylish Flex Wheels further add to its presence. A Ground Clearance of 182 mm and SUV Skid Plates lend an impressive stance while offering protection on rough roads.



Stylish Flex Wheels | Wheel Arch Claddings



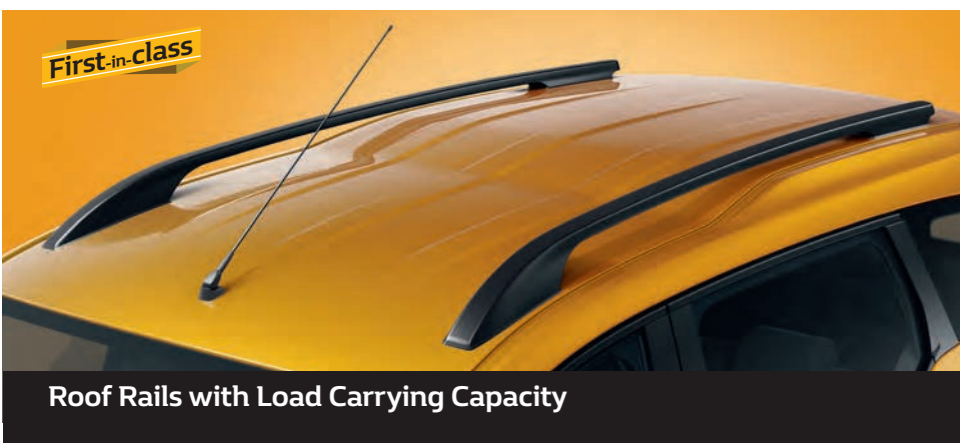
Eagle Beak Split Tail Lamps



SUV Skid Plates



High Ground Clearance



Roof Rails with Load Carrying Capacity

Triple Edge Chrome Front Grille | Projector Headlamps with LED DRLs



Unmatched Space in all Rows with Slide and Recline 2nd Row Seats



Cooled Storage in Centre Console

SUPER SPACIOUS

The new Renault TRIBER has been thoughtfully designed to accommodate comfort and convenience. It features the best-in-class passenger cabin space available in a sub-4m car, a best-in-class boot space of 625 litres (in Life Mode) and interior storage of up to 31 litres. Go ahead, discover space like never before.



625 Litre Boot Space



Upper and Cooled Lower Glove Box



LIFE MODE
5-SEATER

This default mode gives lots of space for 5 people and a best-in-class 625 litre boot space. So that you can carry all your luggage, barbecue set or camping gear effortlessly.



ULTRA MODULAR

The new Renault TRIBER's space is smartly optimised with four exciting modes and 100+ seating combinations to give you all the space you need for your tribe and new experiences.



TRIBE MODE
7-SEATER

Click in two additional EasyFix Seats and you're all set to carry the entire tribe in style.



SURF MODE
4-SEATER

Additional space to accommodate more things or things that take up more length, like a musical instrument or an extra haversack.



CAMP MODE
2-SEATER

Maximum boot space to huddle up, play board games or even relax inside the car.



MODERN AND WELL-EQUIPPED INTERIORS

Experience all-new modern interiors inside the new Renault TRIBER. The dual tone interiors with harmonious trims exude warmth while the new Centre Fascia with sleek chrome edges spells sophistication. The super spacious TRIBER features a stylish dual tone dashboard with silver accents, an LED Instrument Cluster and a Twin AC with vents on 2nd and 3rd rows. Its easy-to-use MediaNav Evolution touchscreen comes integrated with Android Auto, Apple CarPlay, Push-to-Talk and Video Playback on your screen. The smart technology continues in the Smart Access Card with keyless entry and the Push Start-Stop Button, to further enhance your driving experience.



Best-in-class

20.32 cm Touchscreen MediaNAV Evolution | Stylish Dual Tone Dashboard with Silver Accents

Apple CarPlay
androidauto

Android Auto is a trademark of Google LLC



Smart Access Card



Twin AC with Vents on 2nd and 3rd Row



LED Instrument Cluster



Push Start-Stop Button



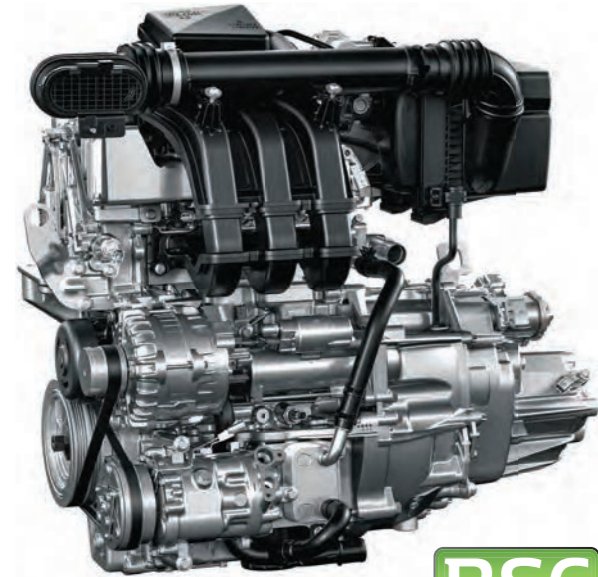
Best-in-class

2 Front Airbags (Driver and Passenger) + 2 Side Airbags (Front Seats)

NEW

ENERGY ENGINE

The new Renault TRIBER offers a perfect balance of performance and fuel economy. With 5-speed manual transmission, it features a peppy 1.0-litre 3-cylinder petrol Energy engine that generates 72 PS with 96 Nm torque. Further equipped with modern technology like the dual VVT system that delivers maximum response at all revs, it ensures optimum acceleration. This along with good fuel efficiency and low maintenance cost, makes the engine ideal for India.

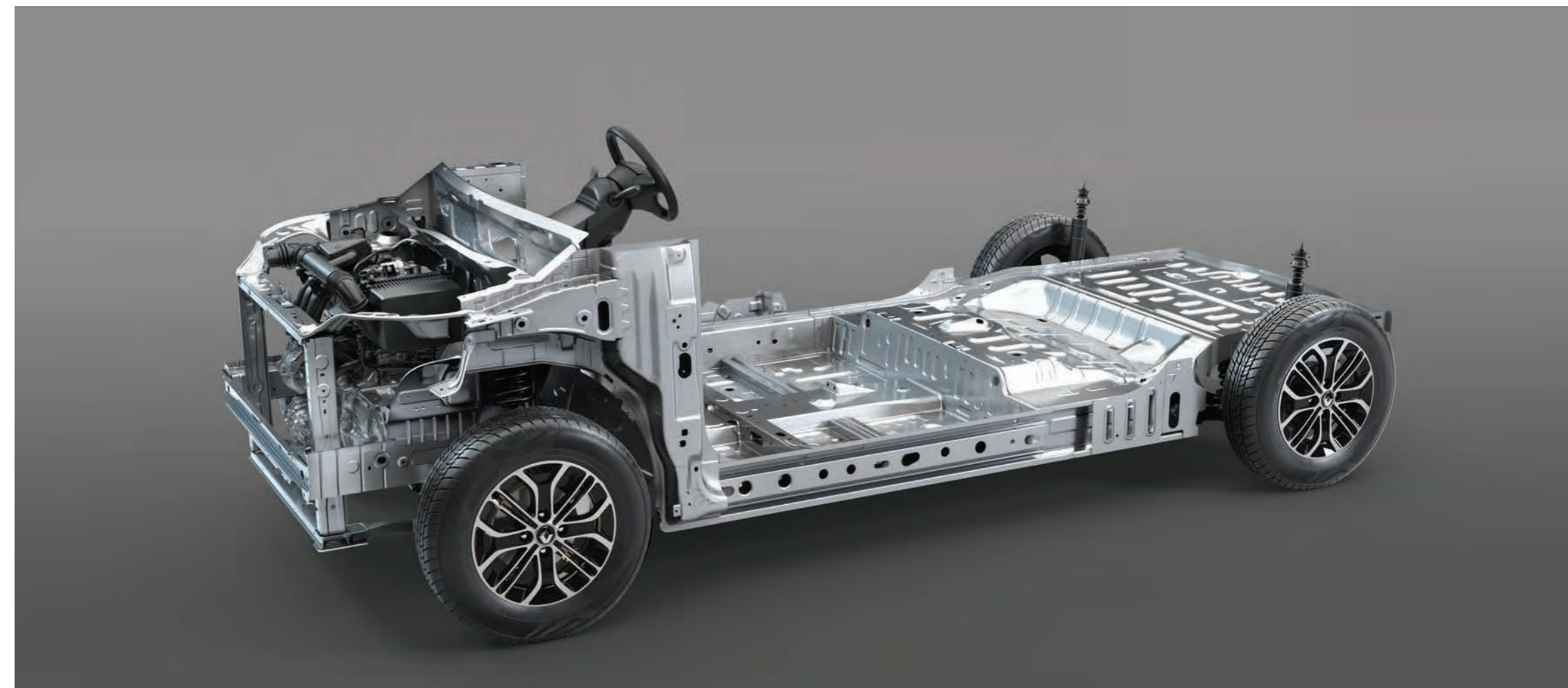


BS6
COMPLIANT



EASY-R AMT

The new Renault TRIBER also comes with a 5-Speed EASY-R AMT that delivers an effortless and comfortable drive. It is equipped with the Traffic Assist function, which allows effortless driving in city traffic conditions. Furthermore, the driver has the option of changing to manual mode to suit his driving requirement. The TRIBER's EASY-R AMT gives you complete peace of mind with a low cost of maintenance and superior fuel efficiency.



NEW UNIQUE

PLATFORM

The new Renault TRIBER is designed on a unique and latest generation modular platform. This offers unbeatable roominess and flexibility. With an optimised engine compartment, it helps maximise space in the passenger compartment. The new platform also provides a superior driving experience and unmatched comfort.

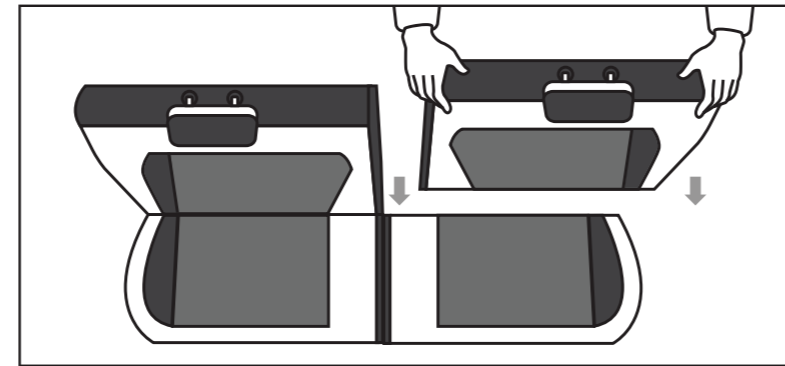
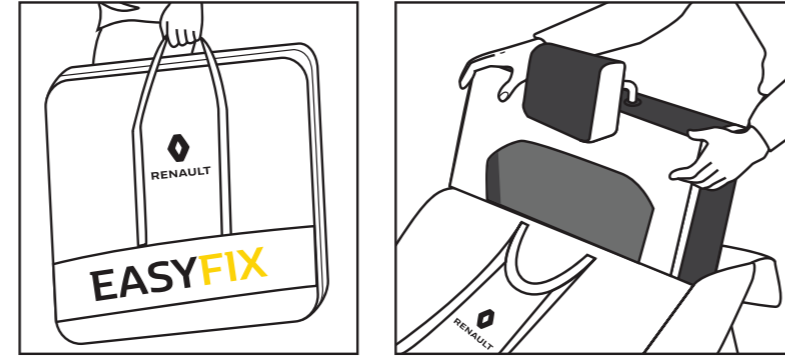
EASY IN. EASY OUT.



First-in-class

EASYFIX SEATS

The new Renault TRIBER comes with first-in-industry innovative EasyFix Seats. These two additional seats can be clicked in or out of the third row, transforming the TRIBER into a 6-seater or a 7-seater instantly. Now, carry your entire group along.



RXE

EXTERIOR DESIGN:

- Projector Headlamps
- Wheel Arch Cladding
- Body Colour Bumper
- Wheel Center Cap
- Black ORVM
- Black Door Handle

INTERIOR DESIGN:

- Dual Tone Dashboard
- Black Inner Door Handles
- LED Instrument Cluster - Amber Colour
- Meson Black Fabric Upholstery

COMFORT:

- Electric Power Steering
- On Board Computer
- Front Power Windows
- Air Conditioning Vents - 1st Row Only
- 2nd Row Seats - Slide/Recline/Fold & Tumble Function
- EasyFix Seats: Fold/Tumble Function
- 60:40 Split 2nd Row Seat
- Electric Tail Gate Release on Center Console
- Open Storage on Center Console
- 12V Socket - 1st Row Only

SAFETY:

- Front Airbag - Driver & Passenger
- ABS + EBD
- Load Limiter + Pretensioner (Driver Only)
- Speed Alert Warning
- Seat Belt Reminder - Driver + Passenger
- Rear Parking Sensor
- Pedestrian Protection

RXL = RXE+

EXTERIOR DESIGN:

- Body Colour Door Handle
- Full Plastic Wheel Cover
- Black Decal on Door
- Black Coloured B & C Pillar
- Body Colour ORVM
- Front Grille with Chrome Insert

INTERIOR DESIGN:

- Dual Tone Dashboard with Piano Black Finish
- LED Instrument Cluster - White Colour
- Side Air Vents with Satin Outline
- Instrument Cluster with Satin Semi-Outline

COMFORT:

- Height Adjust Tilt Steering
- Twin AC with 2nd/3rd Row Vents and Independent Control

- Rear Assist Grips on 2nd & 3rd Row
- Cooled Storage in Center Console
- Remote Central Locking
- ORVM - Manual Internal Adjust
- R&GO Audio System with Bluetooth & USB Connection
- 2 Front Speakers

SAFETY:

- Speed Sensing Door Lock
- Impact Sensing Unlock

RXT = RXL+

EXTERIOR DESIGN:

- Triple Edge Chrome Front Grille
- Roof Rails with Load Carrying Capacity (50kg)
- SUV Skid Plates - Front & Rear

INTERIOR DESIGN:

- Air Vents (Front side) with Chrome
- LED Instrument Cluster with Chrome Semi Outline
- HVAC Knobs with Chrome Ring
- Japda Fabric Upholstery

COMFORT:

- ORVM - Electrical Adjust
- Rear Power Windows
- Front Seat back pocket - Passenger & Driver Side
- MediaNAV with 20.32 cm Touchscreen
- 2 Rear Speakers

- Day & Night Adjustable IRVM
- Rear Room Lighting
- Upper Glove Box
- Cooled Lower Glove Box
- Seat Drawer Under Driver seat
- Vanity Mirror - Passenger Side
- 12V Socket - 2nd Row

RXZ = RXT+

EXTERIOR DESIGN:

- Styled Flex Wheels
- LED DRL

INTERIOR DESIGN:

- Dual Tone Dashboard with Silver Accents
- Chrome Finished Parking Brake Button, Knobs on Front Air Vents, Push Button Surround
- Piano Black Finish Around MediaNAV Evolution
- Silver Finish - Inner Door Handles, Gear Knob, Steering Wheel Insert
- 3D Spacer Fabric Upholsetry

COMFORT:

- 2 Front Tweeters
- Smart Access Card
- Push Button Start / Stop
- Rear Wiper, Washer & Defogger
- Auto Up Down - Driver Window
- Rear View Camera
- Vanity Mirror - Driver Side
- 12V Socket - 3rd Row

SAFETY:

- 2 Side Airbags (Front Seats)

TRIBER

KEY FEATURES

	RXE	RXL	RXT	RXZ
ENGINE & TRANSMISSION	ENERGY MT	ENERGY MT & EASY-R		
Displacement (cc)		999		
Number of Cylinders		3		
Maximum Power Output (PS)		72PS @ 6250RPM		
Maximum Torque (Nm)		96Nm @ 3500RPM		
Transmission type		5-speed manual synchromesh		
Fuel System		Multi Point Fuel Injection		
STEERING				
Type		Electric Power Steering		
SUSPENSION				
Front		McPherson Strut with Lower Triangle & Coil Spring		
Rear		Torsion Beam Axle		
BRAKE				
Front		Disc		
Rear		Drum		
WHEELS & TYRES				
Tyres		165/80	185/65	
DIMENSIONS & CAPACITIES				
Overall length (mm)		3990		
Overall Width Without Mirror (mm)		1739		
Overall Height Without Roof Rails (mm)		1643		
Wheel Base (mm)		2636		
Front Track (mm)		1547	1527	
Rear Track (mm)		1545	1525	
Fuel Tank Capacity (L)		40		
Ground Clearance (mm)		182		
Boot Space (L)				
Life Mode		625		
Tribe Mode		84		



METAL MUSTARD



ELECTRIC BLUE



FIERY RED



MOONLIGHT SILVER



ICE COOL WHITE



RENAULT
Passion for life

www.renault.co.in
Call: 1800 315 4444
SMS TRIBER to 53030

Every precaution has been taken to ensure that this publication is accurate and up-to-date on the date it is printed. This document has been created on the basis of pilot lots and prototypes. As part of its ongoing product improvement policy, Renault India Pvt. Ltd., reserves the right to modify the specifications, vehicles and accessories described and shown at any time. Such modifications are communicated to Renault dealers as quickly as possible. Depending on the country of sale, certain versions may differ and certain equipments may be unavailable (as standard, optional or accessory). Please contact your nearest dealer for the latest information. Due to printing limitations, the colours that appear in this document may differ slightly from the actual paint or upholstery colours. All rights are reserved. The reproduction in any format and by any means of all or part of this publication without prior written authorisation from Renault is prohibited. Segment definition based on Renault internal classification.

Scan with your phone
camera to
explore the TRIBER

